

# **FEAD Conference 2010**

## **Amsterdam**

**President DWMA**  
**Ir. Pieter H. Hofstra**  
**Dutch Senator**

# FEAD Conference 2010

Welcome !

- About DWMA
- Challenges ahead for Society
- Waste Management offers solutions!



European Parliament in Brussels



Parliament in The Hague

Ir. Pieter H. Hofstra

## DWMA: active in Brussels and The Hague

# Dutch Waste Management Association

[www.wastematters.eu](http://www.wastematters.eu)

## Activities

Collection

Recycling

Bio-  
conversion

Energy from  
Waste

Landfilling

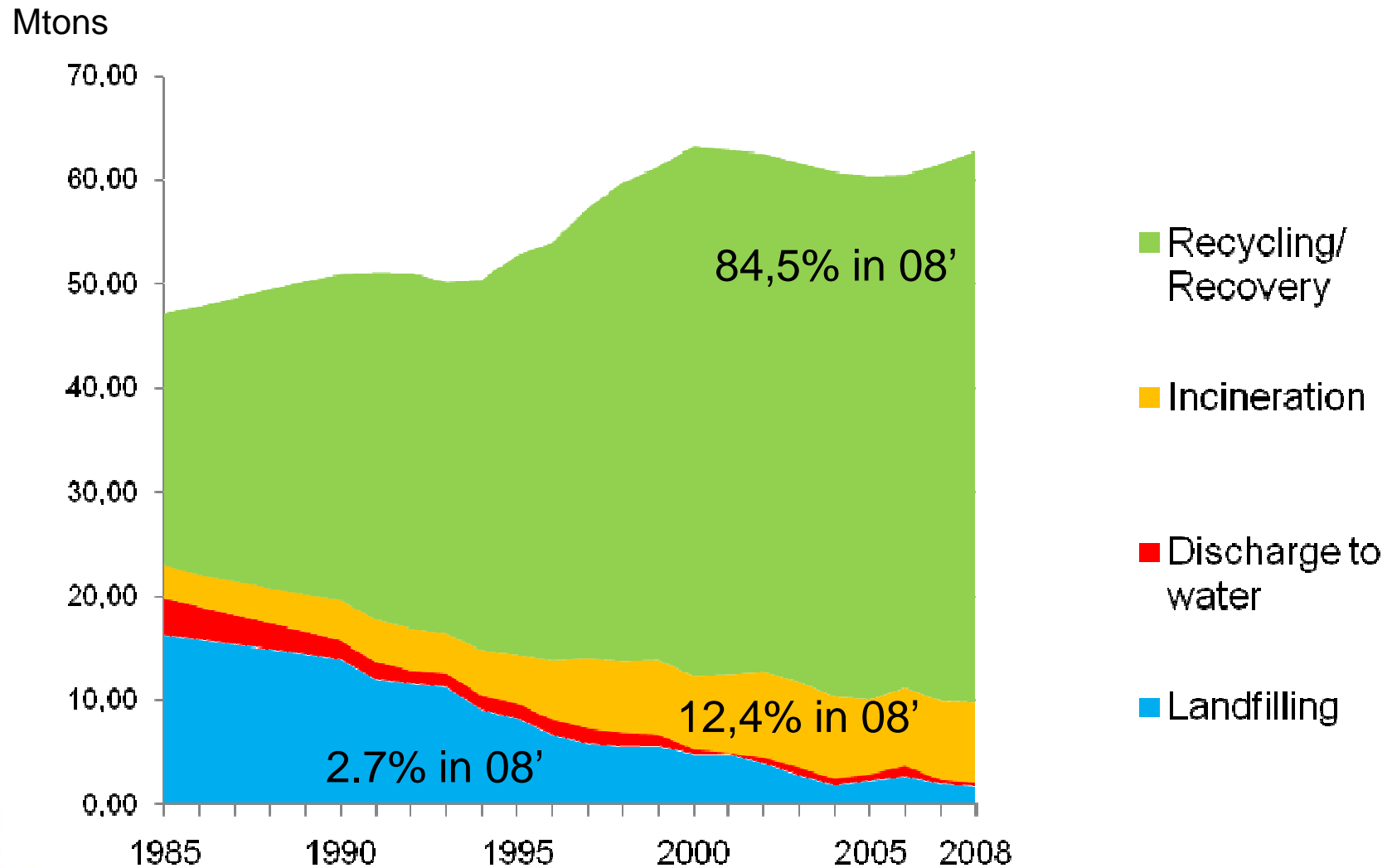
Sewer maintenance  
and Street Cleaning

### DWMA:

- Turnover 6 billion
- Employees 30.000
- Representing 65% market share and waste volumes



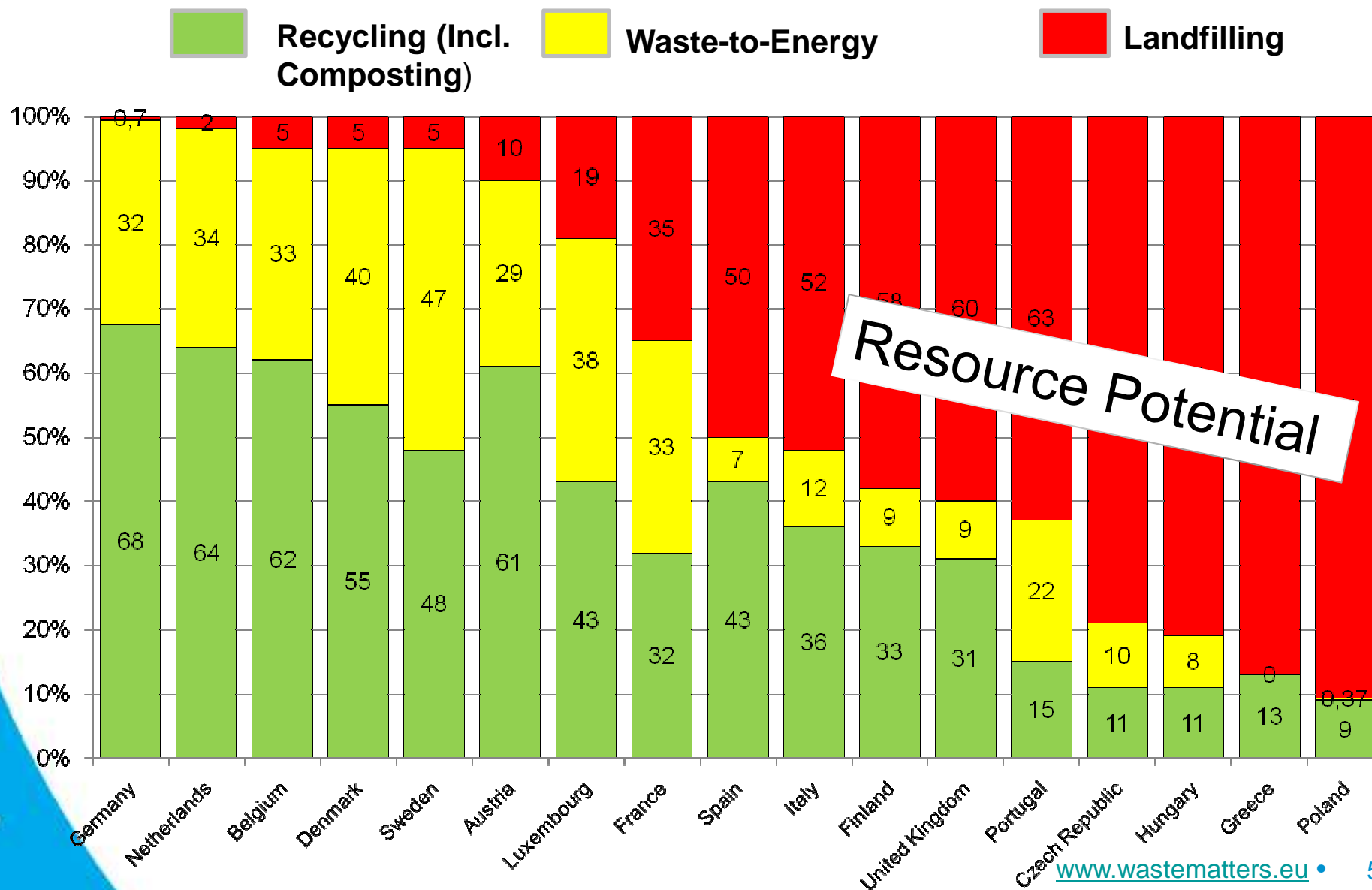
# Waste Produced and treated in Netherlands



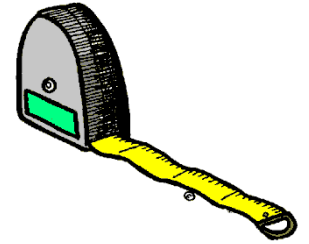
Source: CBS/LAP2

# Treatment of MSW in the EU 27 in 2006

Source: EUROSTAT



# Benchmark 2009



## Continuity and long term stability through:

- A. Return on investment
- B. Sustainability
- C. Innovation, Carbon footprint, MVO



	A)	B)	C)
+	EBIT > 9%	Stage 3	3-6
O/+			
O	EBIT 5-9%	Stage 2	1-2
-/O			
-	EBIT < 5%	Stage 1	<1

EBIT: in % turnover

# Results benchmark top 15

	Return	Sustainability	MVO-CO2
VGG	-6,1	2,5	3
Sita	7,1	2,5	3
Shanks	9,6	2,5	2,5
Attero	25,1	2,25	1,75
HVC	19,6	2,5	3
AEB	0,5	2,5	2,5
Delta-M	12,6	2	1,5
Omrin	4,8	2,5	2
Twence	24,8	2,5	2,25
Rova	8,6	2	2,25
Dusseldorp	6,5	2	1
ARN	16,6	2,25	2
IRADO	5,0	2	1,25
Meerlanden	6,3	2	3,5
VAR	7,4	2,5	2,5



# Focus FEAD Conference



- **Implementation** EU Waste Law



- **Efficient use** of resources; contribution of Waste Sector to a Resource Efficient Europe (world)

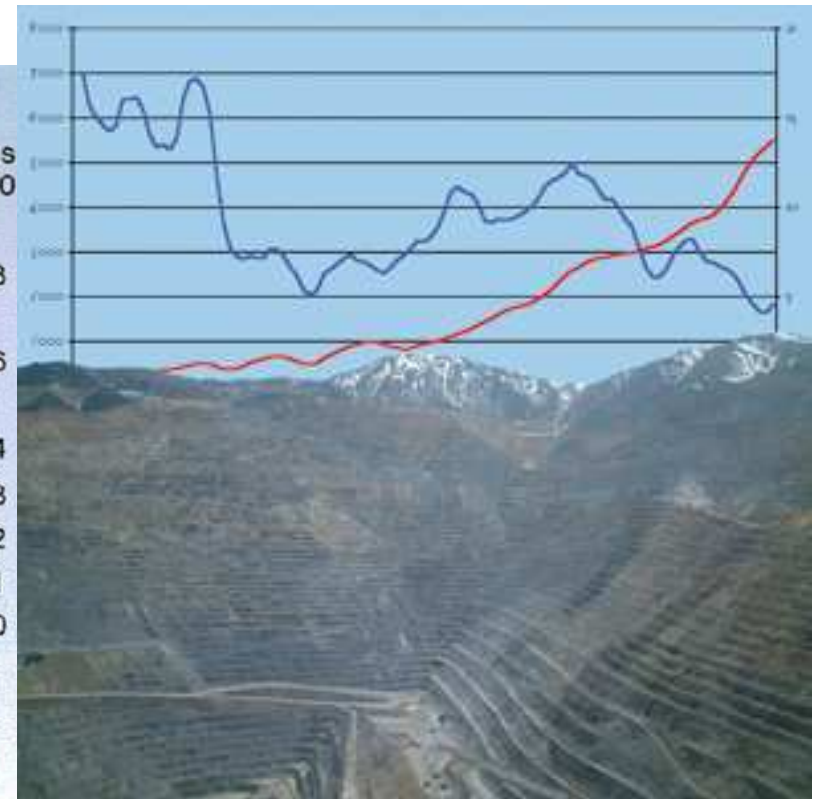
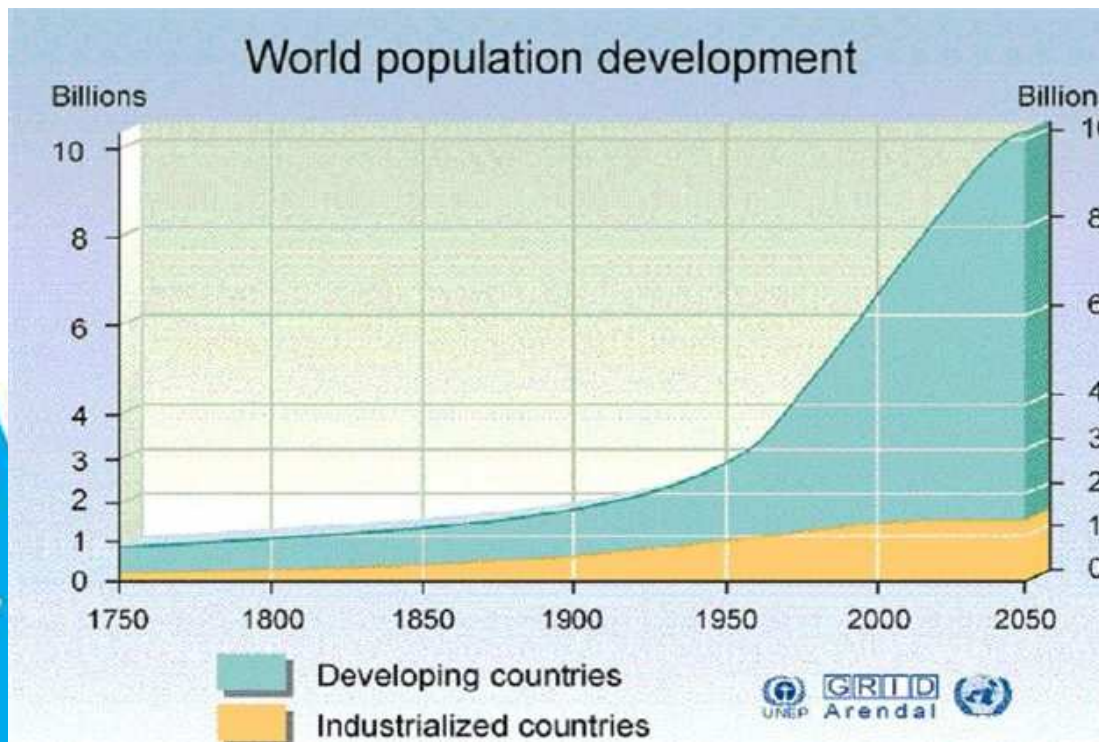
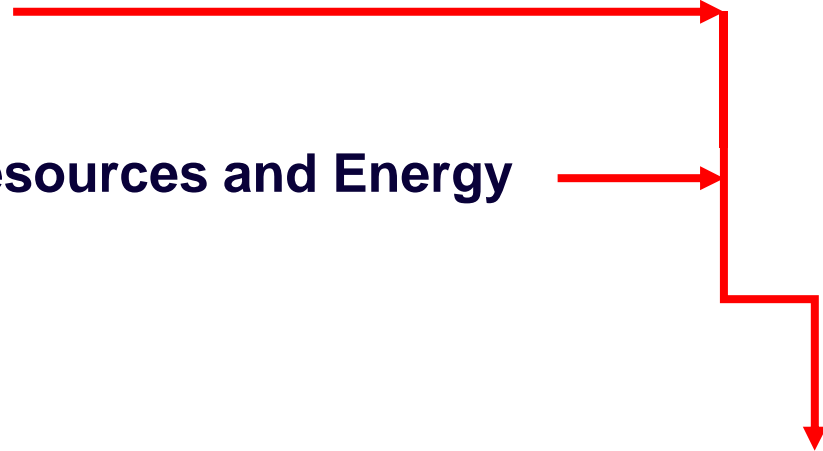
- European waste management: **best practice examples**





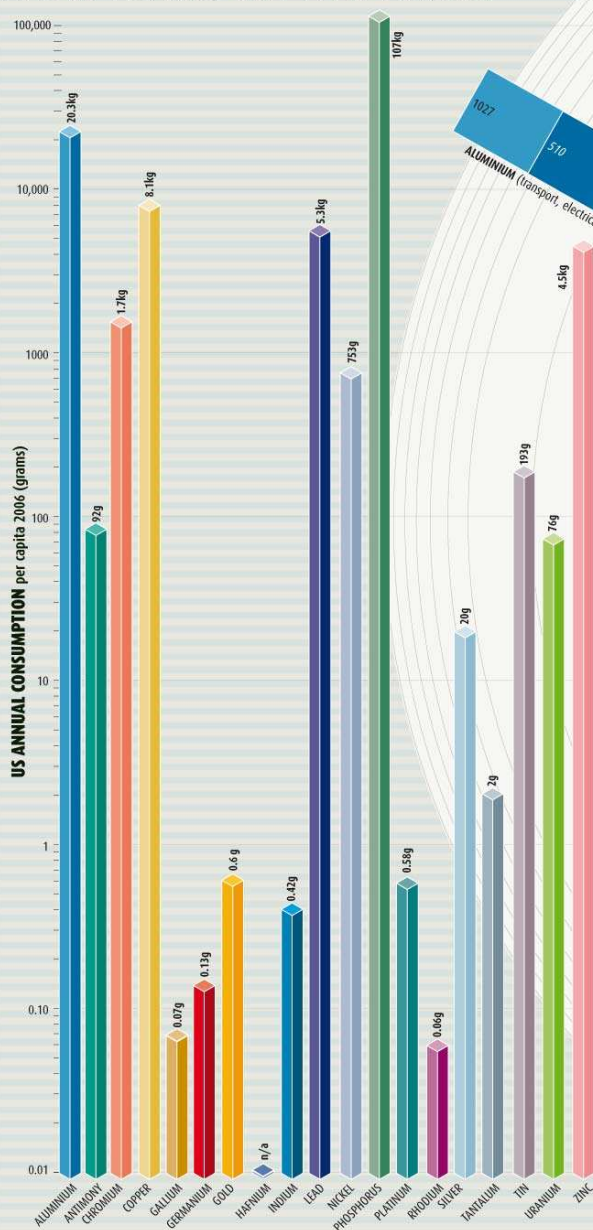
# An inconvenient future

- **World Population**
- Impact Climate Change
- **Scarcity of Natural Resources and Energy**
- Loss of Biodiversity
- Urbanization, Poverty



# Scarcity raw materials: Recycling a chance!

## HOW LONG WILL IT LAST?

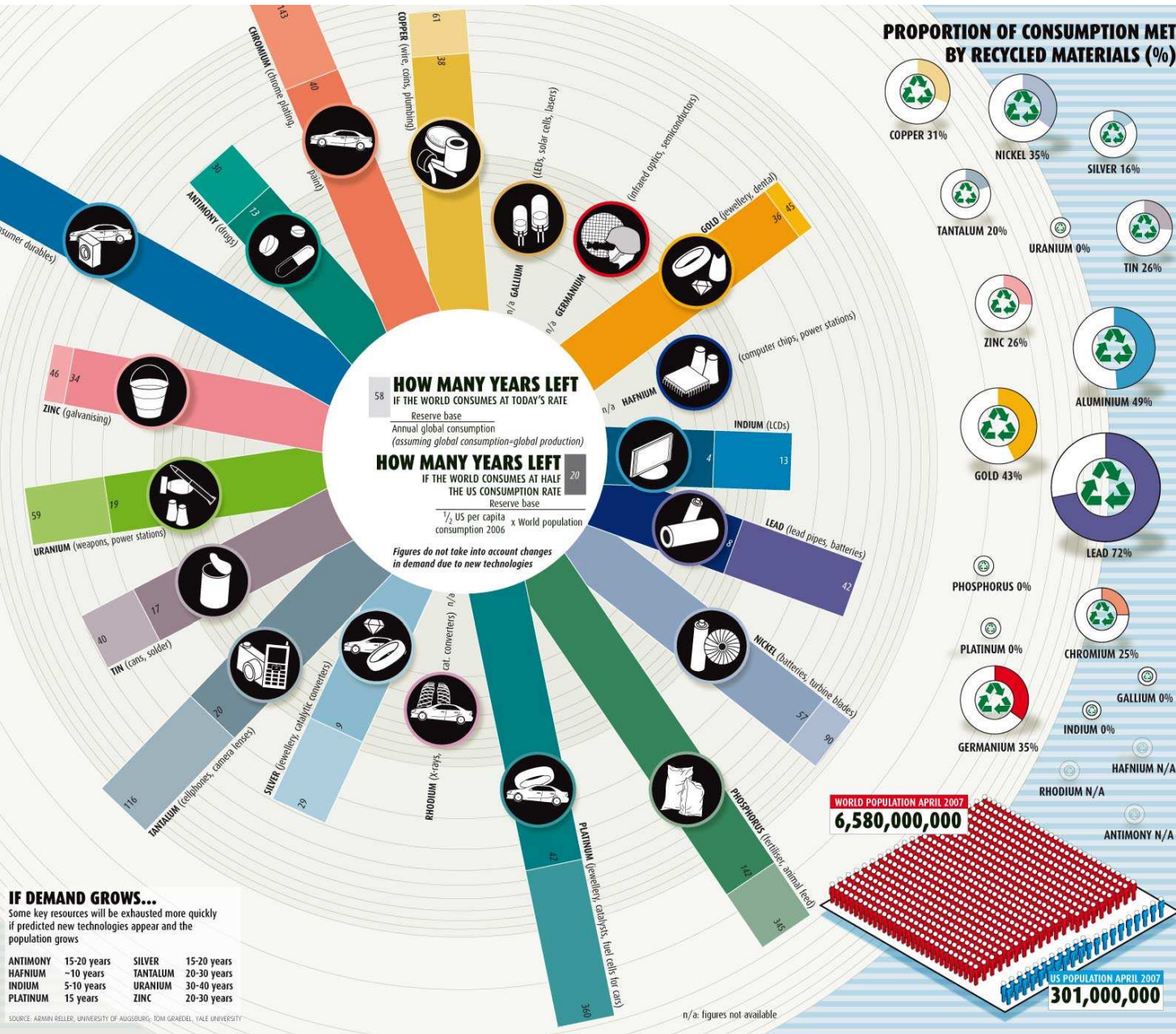


### IF DEMAND GROWS...

Some key resources will be exhausted more quickly if predicted new technologies appear and the population grows

ANTIMONY	15-20 years	SILVER	15-20 years
HAFNIUM	~10 years	TANTALUM	20-30 years
INDIUM	5-10 years	URANIUM	30-40 years
PLATINUM	15 years	ZINC	20-30 years

SOURCE: ARMIN REILLER, UNIVERSITY OF AUGSBURG; TOM GRAEBEL, YALE UNIVERSITY





# Waste Management avoids CO<sub>2</sub>!

✓ EU target: 20% CO<sub>2</sub> reduction compared to 1990

- 14 % compared to 2004

- Equivalent of 780 Mt CO<sub>2</sub>

✓ **Several studies lead to same conclusion**

- Conclusion Prognos: **contribution EU waste sector minimal 19 % EU CO<sub>2</sub> target**

<b>Organisation</b>	<b>Focus</b>	<b>Scenarios*</b>	<b>Additional Potential in M tonnes CO<sub>2eq</sub> **</b>
<b>Ökopol</b>	Recycling MSW	53 -65% recycling	89 – 145***
<b>FFact</b>	Energy from MSW	40% in WtE	45
<b>Solagro</b>	Landfilling of MSW	emission control ↗ energy recovery rate ↗ landfilling ↘	81
<b>European Environment Agency</b>	Total MSW	landfilling ↘ recycling/WtE ↗	85***
<b>Prognos</b>	12 waste streams (1.16 Bt) ; 48% total waste produced in 2004 + MSW	<u>4 Scenario's including in S1-S4</u> R1 for WtE 50- 60 % recycling MSW 70- 80 % recycling C&D	85 - 120 remaining MSW*** / **** 61 - 114 Streams 146 - 234 Total

\* Zero waste growth/ waste stays at levels of basic year

\*\* Per year starting from 2004/2005 (depending on study)

\*\*\* These results are including CO<sub>2</sub> savings via energy recovery

# Looking ahead



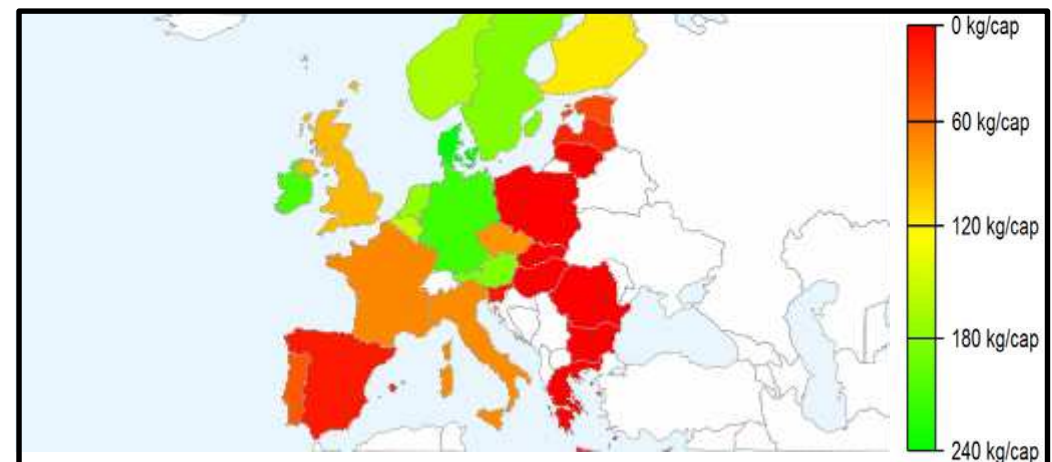
## Shape EU law

### Un- exhaustive wish list

- Focus on implementation EU Waste Law
- Promote the recovery of Biowaste (Biowaste Directive)
- Promote: 'Waste is a Resource'
- Review the 10 year old Landfill Directive

Recycling of biodegradable  
municipal waste in kilo per  
capita in 2006

Source: ETC/SCP



# Focus FEAD Conference



- **Implementation** EU Waste Law



- **Efficient use** of resources; contribution of Waste Sector to a Resource Efficient Europe



- European waste management: **best practice examples**

